

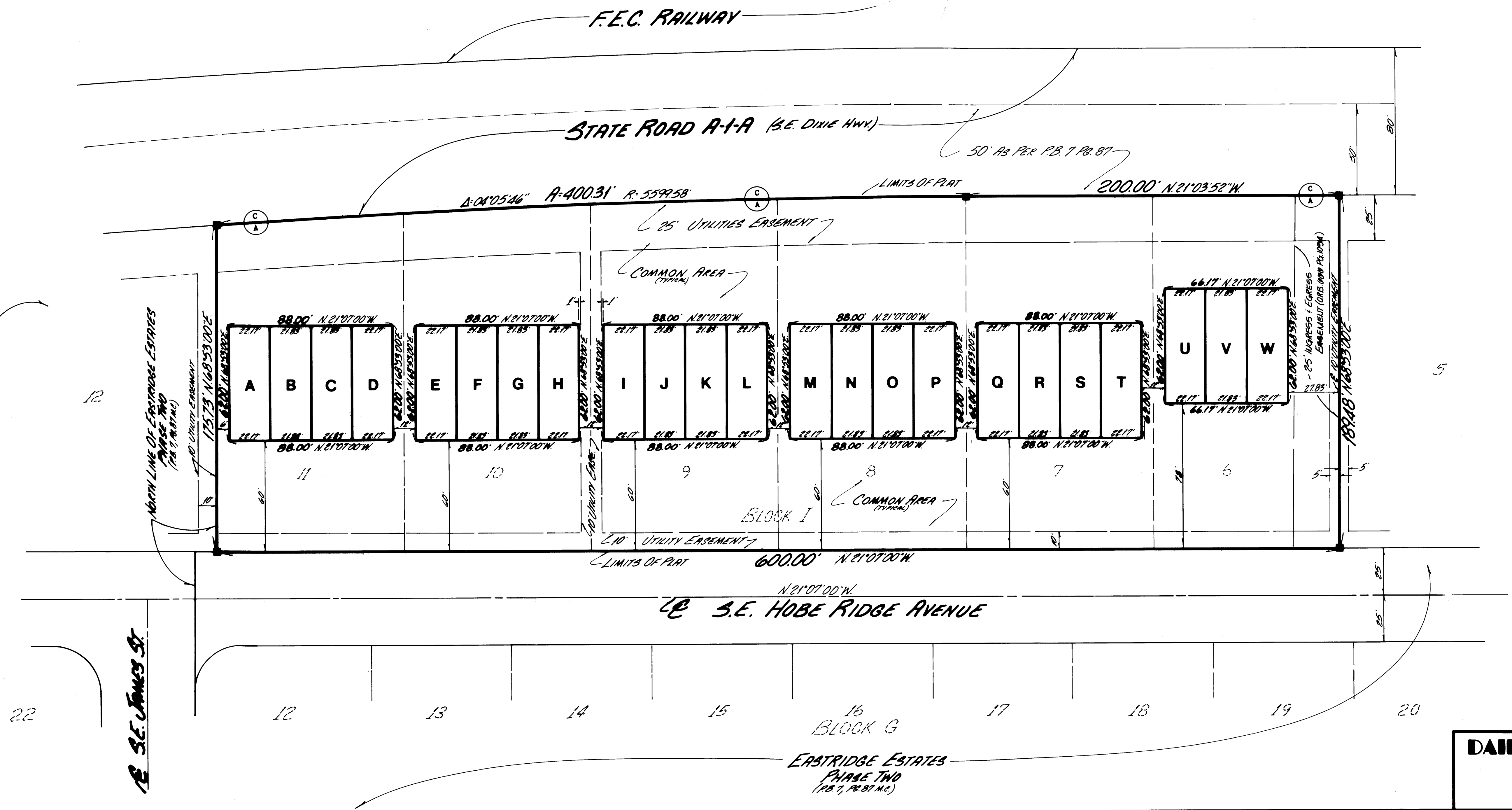
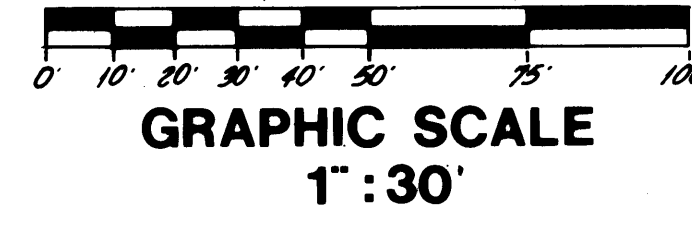
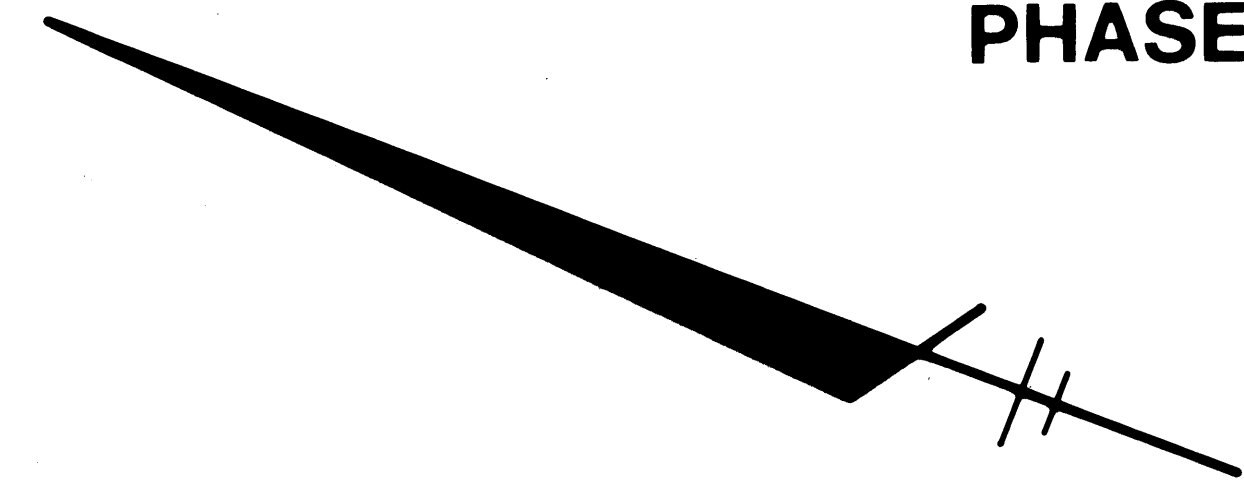
# EASTRIDGE COURT SOUTH

A REPLAT OF LOTS 6 THRU 11, BLOCK I, PLAT OF EASTRIDGE ESTATES, PHASE TWO, PLAT BOOK 7, PAGE 87, MARTIN COUNTY, FLORIDA.

I, MARSHA STILLER, CLERK OF THE CIRCUIT COURT OF MARTIN COUNTY, FLORIDA HEREBY CERTIFY THAT THIS PLAT WAS FILED FOR RECORD IN PLAT BOOK 10, PAGE 77, MARTIN COUNTY, FLORIDA, PUBLIC RECORDS, THIS \_\_\_\_\_ DAY OF \_\_\_\_\_, 19\_\_\_\_

MARSHA STILLER  
CLERK, CIRCUIT COURT  
MARTIN COUNTY, FLORIDA

FILE NO. \_\_\_\_\_ BY: \_\_\_\_\_  
DEPUTY CLERK



SHEET 2 OF 2

**DAILEY AND ASSOCIATES**  
LAND SURVEYORS  
4115 WEST INDIANTOWN ROAD  
JUPITER, FLORIDA 33458  
PHONE: (305) 746-8424